



Proactive.  
Comprehensive.  
Engaging.



Remote heart failure management to proactively address congestion with a complete clinical picture, including pulmonary artery (PA) pressure and vital signs.



# Meet Cordella®

The first and only remote heart failure (HF) patient management platform\* with daily pulmonary artery (PA) pressure and vital sign data. Cordella enables comprehensive clinical management in the home for proactive congestion reduction.



Daily routine



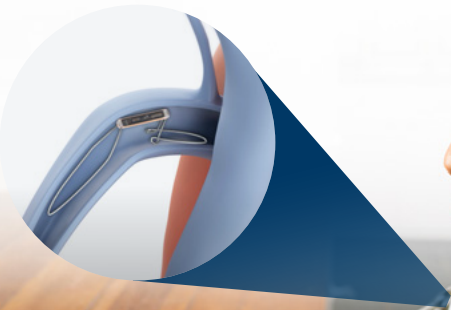
Avg. patient submissions/wk<sup>1</sup>



say Cordella is easy to use<sup>2</sup>

\* for New York Heart Association (NYHA) class III HF patients

Cordella Sensor implant

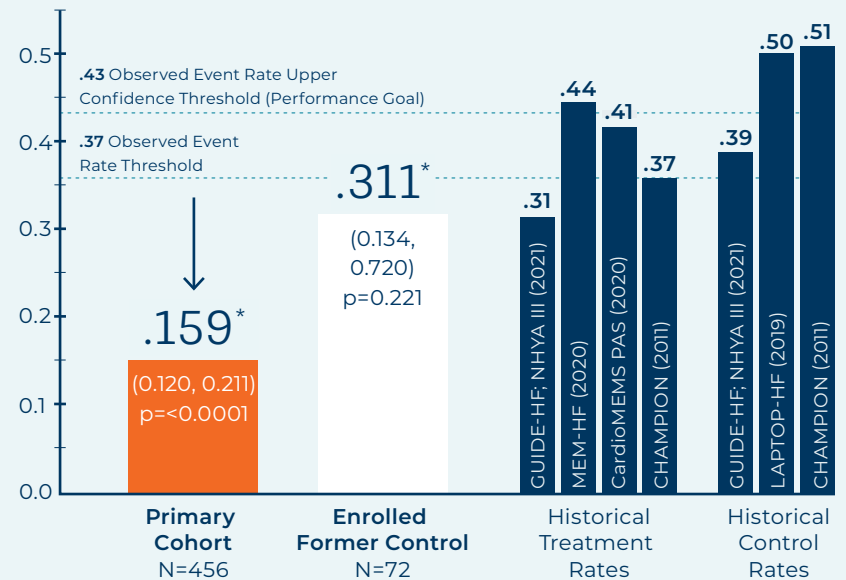


At-home myCordella™ Patient Kit

# Clinically Proven to Enable Better HF Care

In clinical trials for NYHA class III HF patients, Cordella demonstrated a significantly lower HFH/all-cause mortality event rate than historical PA pressure studies, significant improvement in key patient quality of life metrics, and a low complication rate with a proven safety profile.<sup>1,2</sup>

## 6-month Incidence of HF Hospitalizations or All-Cause Mortality<sup>1</sup>



Reduction in HFH/all-cause mortality rate of PA pressure-guided HF management vs. former control group

### KCCQ

5-point clinical improvement<sup>1</sup>

### 6-Minute Walk Test

23 m improvement<sup>1</sup>



Reduction in HF hospitalization rate pre/post Cordella<sup>1</sup>

# Get Ahead. Decongest.

Proactively manage worsening HF from home to improve patient outcomes.



## PA Pressure-Guided Therapy

An accurate indicator of congestion, PA pressure trends guide medical management to achieve target pressure and provide an early indication of worsening HF.



## Comprehensive Clinical Picture

Daily health metrics captured from the home and trended over time provide a complete clinical picture for medication titration.

- Blood Pressure
- Heart Rate
- Blood Oxygen
- Weight
- Health Questions



## Streamlined Patient Care

Seamless clinic workflow, including secure patient messaging and patient triaging, supports informed remote clinical decision-making and guideline-directed medical therapy (GDMT).



## Exceptional Patient Engagement

User-friendly platform enables patient-preferred seated PA pressure readings and allows patients to view their health trends, promoting sustainable lifestyle choices.

# More Insight. Confident Care.



## Simple Habits. Strong Engagement.



of patients want to see their health data<sup>3</sup>



of patients believe PA pressure monitoring with Cordella & resulting care has a positive health impact<sup>3</sup>



patients made lifestyle changes based on daily readings<sup>2</sup>

The potential risks of the Cordella PA sensor procedure are similar to other heart procedures. The most serious risks include, but are not limited to, death, serious damage to the arteries or valves, serious bleeding, pulmonary embolism/occlusion, allergic reactions, arrhythmias, renal issues, and worsening heart failure.

## Ordering Information

To place an order, send an email to [orders@endotronix.com](mailto:orders@endotronix.com), call 888-512-5153, or talk to your Endotronix sales representative.

Catalog No.	Description
CRDLA001US	<b>Single Commercial System</b> (1) Reader, (1) Delivery System, (1) Cordella System
CRDLA002US	<b>Single Commercial Start Up Kit</b> (1) Reader, (1) Delivery System, (1) Cordella System, (1) CalEq
CRDLA003US	<b>Commercial Bundle</b> (3) Readers, (3) Delivery Systems, (3) Cordella Systems
CRDLA004US	<b>Commercial Start Up Bundle Kit</b> (3) Readers, (3) Delivery Systems, (3) Cordella Systems, (1) CalEq



### INTENDED USE

The Cordella Pulmonary Artery Sensor System is intended to measure, record and transmit pulmonary artery pressure (PAP) data from NYHA Class III heart failure patients who are at home on diuretics and guideline-directed medical therapy (GDMT) as well as have been stable for 30 days on GDMT. The device output is meant to aid clinicians in the assessment and management of heart failure, with the goal of reducing heart failure hospitalizations.

For important safety information, please visit [endotronix.com/safety](https://endotronix.com/safety). See the Instructions for Use for a complete listing of the indications, contraindications, warnings and precautions.

In the U.S., the Cordella PA Sensor System is Rx Only. CAUTION: Federal law restricts this device to sale by or on the order of a physician.

In Europe, the Cordella PA Sensor System is Exclusively for Clinical Investigation.

- 1 Guichard JL et al. J Am Coll Cardiol HF. 2024 Aug 2:S2213-1779(24)00485-2.
- 2 Sharif F et al. ESC Heart Fail. 2024 Apr; 11(2):1133-1143.
- 3 Guichard JL et al. Presented at THT 2023, Boston MA.

\* Datapoints from the FDA Summary of Safety and Effectiveness Data (SSED) varied slightly due to a change in statistical analysis from published PROACTIVE-HF results (0.15, 0.28, and 44%).



1415 West Diehl Road, Suite #500W | Naperville, IL 60563

[Endotronix.com](https://Endotronix.com)

©2024 Endotronix, Inc. All rights reserved. Endotronix, myCordella and Cordella are trademarks of Endotronix, Inc.

The A&D marks are owned by A&D Engineering, Inc. and are used by Endotronix with permission of A&D Engineering, Inc. The Nonin marks are owned by Nonin Medical, Inc. and are used by Endotronix with permission of Nonin Medical, Inc.

ML6538 Rev A